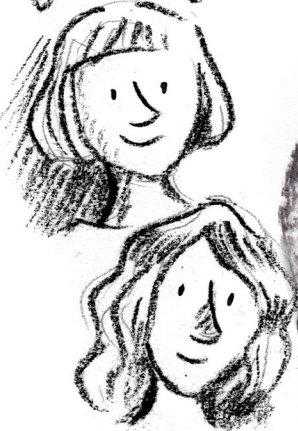


# MAKING SENSE

# Charcoal

**TOWNER**  
Eastbourne

ESTHER



WILLOW

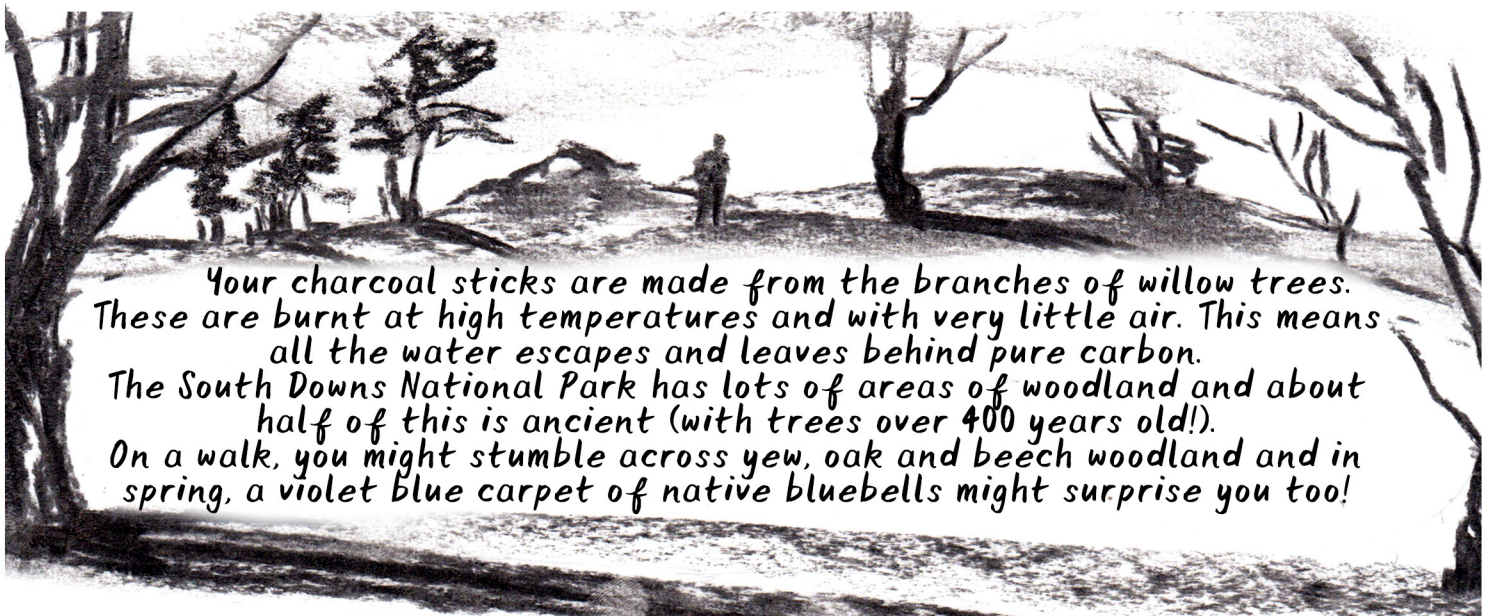
Hello from Esther and Willow at Towner Eastbourne!  
This pack is one of two you'll receive as part of our **MAKING SENSE** series- you'll get the next one in about four weeks' time. Each pack has some natural making materials and lots of suggestions for how to work with these, but you can use them however you like. People all over East Sussex are taking part in this project. You can show us what you're making by sending photos to [Esther.Collins@townereastbourne.org.uk](mailto:Esther.Collins@townereastbourne.org.uk) or posting on Instagram and tagging [@HelloTowner](https://www.instagram.com/HelloTowner) (Please check first if you're a child).  
Thank you and we're excited to welcome you back to the gallery soon.

Look inside your kit and you'll find a box of charcoal sticks. Lots of artists work with charcoal because of its rich black strokes.

Have a look at this charcoal drawing by artist Dennis Creffield. Notice the areas of light and dark and thick and thin strokes. He's added charcoal and rubbed it away again. You could try this too with your fingers or a rubber.



Dennis Creffield, Study for 'The Resource of Loneliness', 1977. © The Artist's Estate. Towner Collection



Your charcoal sticks are made from the branches of willow trees. These are burnt at high temperatures and with very little air. This means all the water escapes and leaves behind pure carbon. The South Downs National Park has lots of areas of woodland and about half of this is ancient (with trees over 400 years old!). On a walk, you might stumble across yew, oak and beech woodland and in spring, a violet blue carpet of native bluebells might surprise you too!

# SHADOW DRAWINGS

**TOWNER**  
Eastbourne

To find your shadows you'll need a source of light. This could be the sun if you have access to the outdoors or you can sit by a window on a bright day.

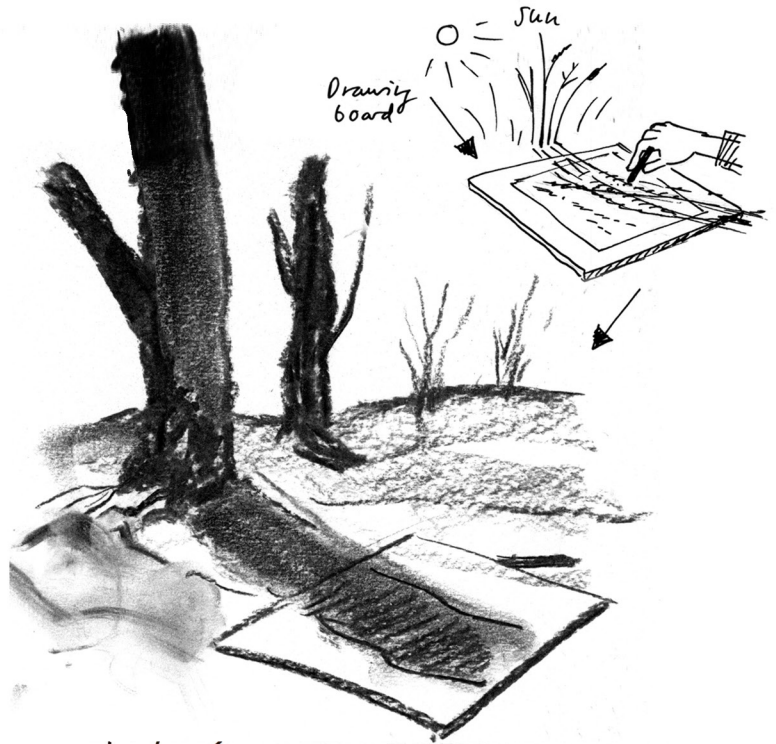
1) If you are able to work outside (when it is safe to do so), it will be easier to move your paper on top of a drawing board.

This could be a tray, some firm cardboard or a large book.

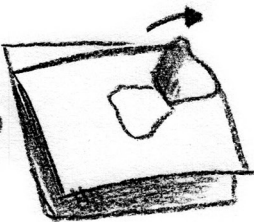
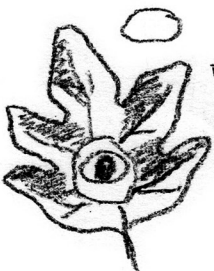
2) Look out for a nice spot where your paper can capture shadows

3) Notice what happens when you move your paper closer and further from the source of the shadow. Trace around shadows of plants, trees, clouds...

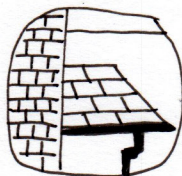
You could try using the long edge of your charcoal for covering big surfaces & use the point for details



**PLAY** - with MAKING MARKS  
crumbling pressing hard  
smudging



WHAT  
can  
you  
SEE?



## creating a Viewfinder

Sometimes it can feel overwhelming to look at a landscape or view as a whole. There is so much to see.

Making a viewfinder helps you to look at smaller sections at a time and to notice what's around you.

Tear shapes out of paper, cardboard or large leaves

If you like you can put your observations down on paper

# CHARCOAL TECHNIQUES

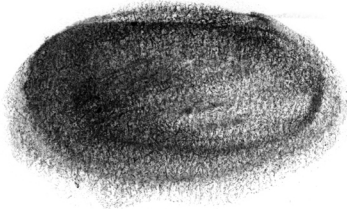
**TOWNER**  
Eastbourne

Here are a few ways you can use your CHARCOAL

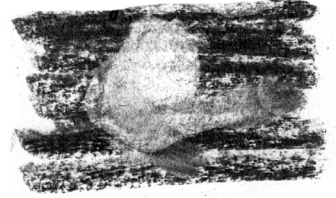
**HATCHING**  
(thin lines)



**BLENDING/ SMUDGING**  
(with your finger)



**LIFTING**  
(using StickyTack)



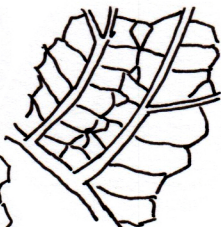
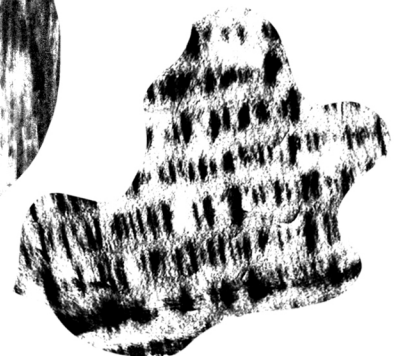
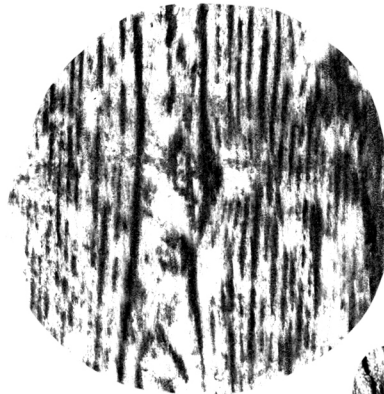
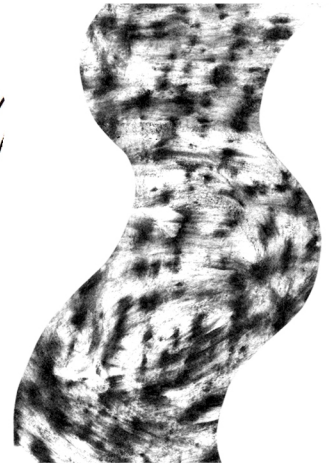
## RUBBING

YOU WILL NEED PAPER AND CHARCOAL:

- 1) Rest a sheet of paper against a textured surface
- 2) Rub the flat side of your charcoal gently over the paper
- 3) Notice how this creates a copy of your surface

You might find exciting textures to use on the floor, the wall and even outside!

You can protect your rubbings from smudging by misting some hairspray over them



You may find that some of your textures create repeating PATTERNS. You can also look for repeating patterns in nature. Next time you go for a walk, try to spot some...

These packs are made possible thanks to generous support from  
**SOUTH DOWNS**  
**NATIONAL PARK**

John Jackson Charitable Trust and  
Sussex Community Foundation

# MAKING SENSE

# WATER

# TOWNER Eastbourne



Helen Mockford, Chalk Pit II, Undated © Artist's Estate, Towner Collection

In Mockford's painting you can see the many layers she observed in the landscape all around her.

This watercolour painting was created by artist Helen Mockford. It was inspired by the landscape of the South Downs.

Many artists are reliant on water as a raw material to create their artworks. Water is also a powerful source of inspiration.



During a walk on the South Downs you might come across different landscapes like chalk downland, lowland heath, woodland, wetland, rivers and coastal areas. These have been formed or shaped by water.

Once you start looking, you'll notice water all around you...

Let's get started with a nice cup of tea (get help if you need it)



On a cold day, you might notice water appear on your windows as **CONDENSATION**. You can use your finger to draw in to it.

Try using your **BREATH** to make your own condensation.

What can you see? Clouds? Birds?



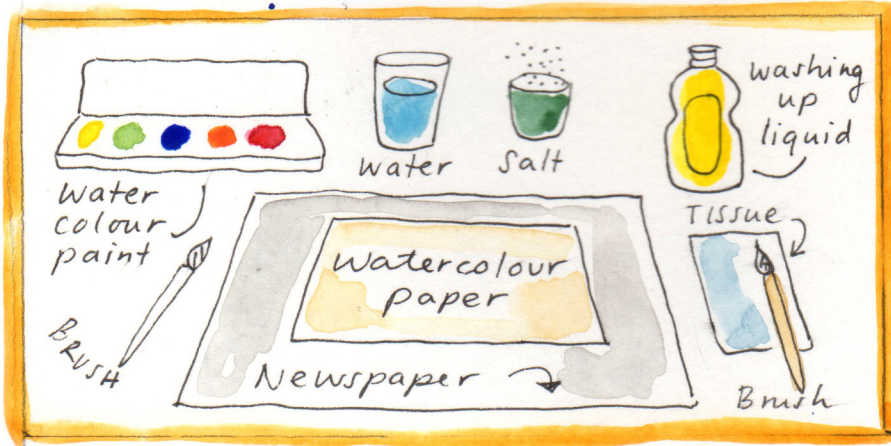
These packs are made possible thanks to generous support from

**SOUTH DOWNS  
NATIONAL PARK**

John Jackson Charitable Trust and  
Sussex Community Foundation

# WATERCOLOUR Experiments

**TOWNER**  
Eastbourne



Let's begin by setting up our workspace

You can collect  
RAINWATER  
to use with your  
WATERCOLOURS



1) Create mini water puddles on your paper

2) Load your brush with colour and dip the tip into your first puddle.

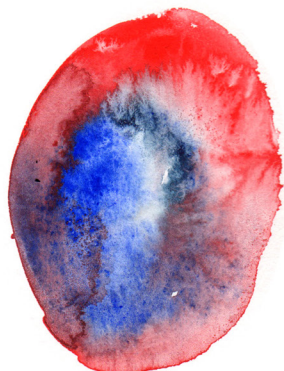
3) You'll see the colour spreading outwards. Add more water if it starts to get dry

**YOU COULD TRY:**  
Letting puddles merge into each other by connecting them with lines of water

Playing with drips

Mixing and blending warm and cold colours

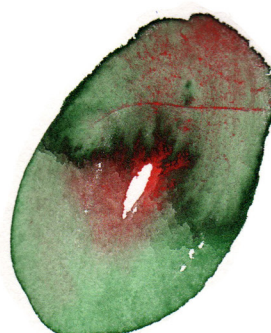
Adding grains of salt or drops of washing up liquid and noticing how this makes the colours move on the page



SPRINKLE OF SALT



DROP OF WASHING UP LIQUID

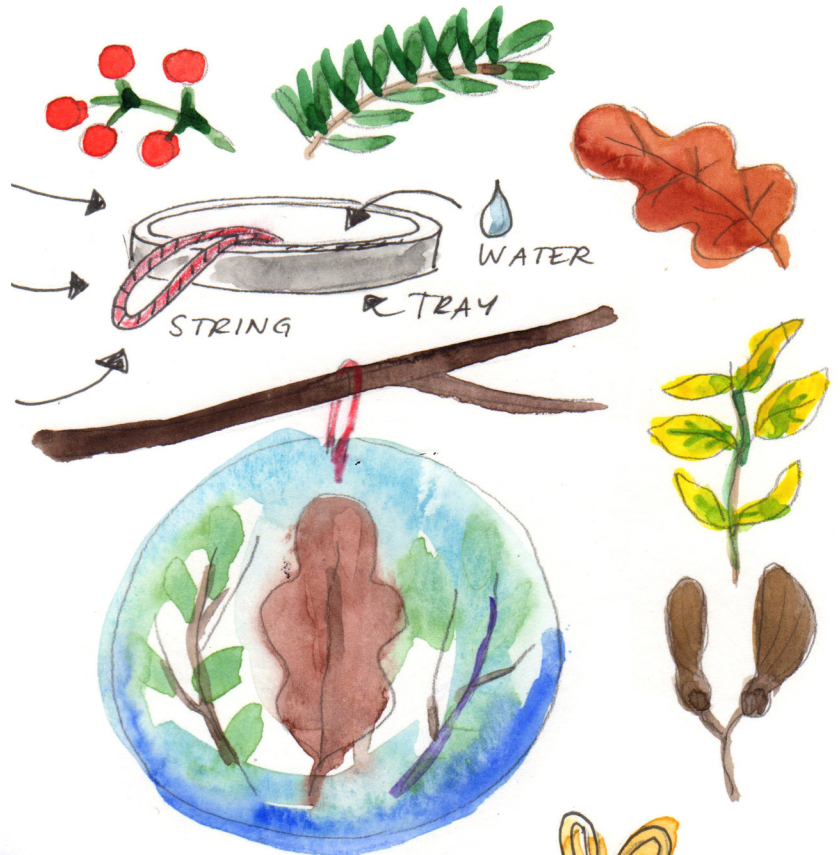


**TIP:**  
Clean your brush between using colours

# FROZEN FORMS

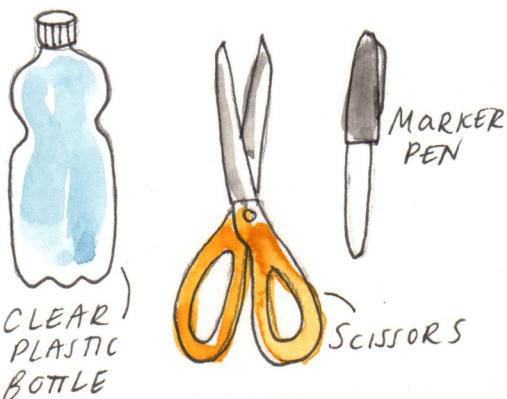
**TOWNER**  
Eastbourne

- 1) Collect natural forms
- 2) Create a shallow foil tray or use the lid of a container - this needs to have a raised outer lip and a smooth surface
- 3) Arrange your nature finds in the shallow tray and place a folded piece of string against the edge
- 4) Fill the dish with water. Place outside if it's cold enough or leave in the freezer over night
- 5) Gently pop the frozen form out of the tray
- 6) Hang outdoors and watch your forms suspended in ice until it melts away.



You can create a **WATER MAGNIFYING GLASS** to **OBSERVE** your natural finds more closely.

YOU WILL NEED:



Thank you for starting this journey with us. We'd love to see what you've been up to. You can share your experiments by emailing [esther.collins@townereastbourne.org.uk](mailto:esther.collins@townereastbourne.org.uk) or posting on Instagram and tagging @HelloTowner.